



Joomla! extension JSN PowerAdmin User Manual

(for JSN PowerAdmin 1.x)



www.facebook.com/joomlashine



www.twitter.com/joomlashine



www.youtube.com/joomlashine

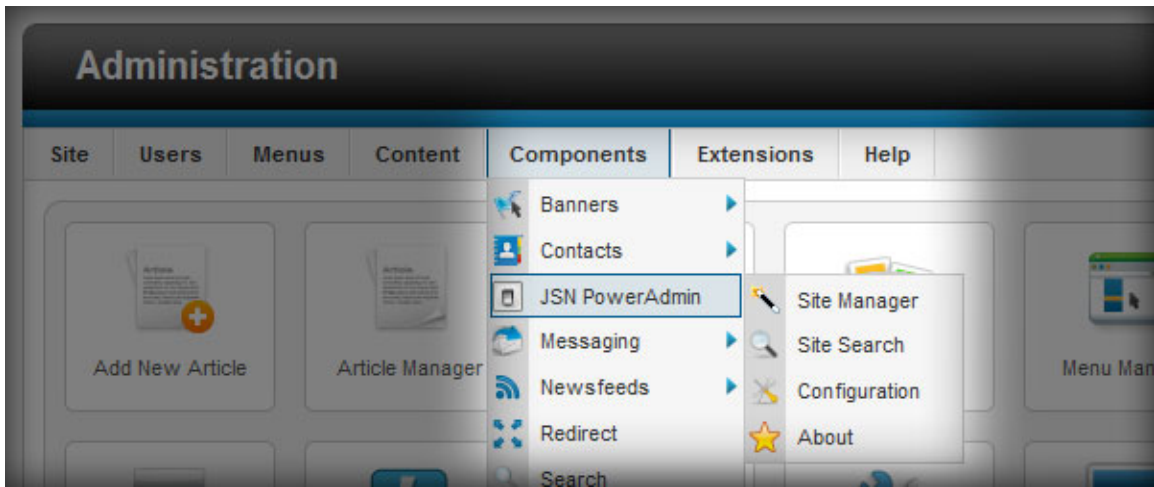
This documentation is release under Creative Commons Attribution-Non-Commercial-Share Alike 3.0 Unported Licence. You are free to print this document for convenient usage.

Copyright © 2008 - 2012 <http://www.joomlashine.com>

Table of Contents

<i>Joomla! extension JSN PowerAdmin User Manual</i>	1
Table of Contents	2
Introduction	3
Features Overview	4
AdminBar	4
Site Manager.....	7
Site Search.....	22
Site Configuration.....	22
What's next?	26

Introduction



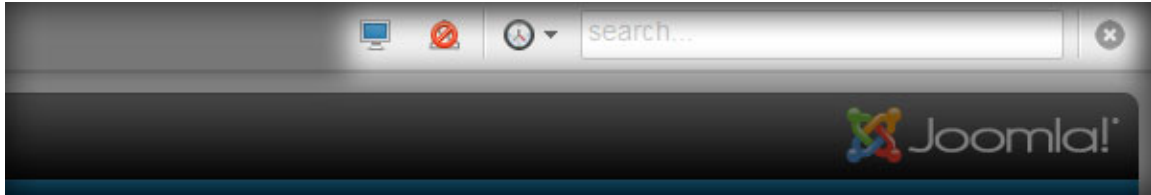
Joomla extension JSN PowerAdmin was built with one single goal: **Help people manage their Joomla website with easy and joy.**

We believe that it helps you save a lot of time taking control of your Joomla website. Now you can edit website content, search items, etc more easily than ever.

Now, let's get started!

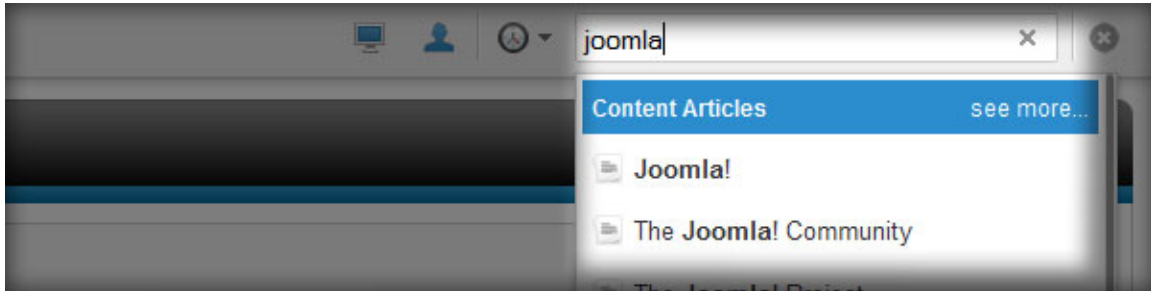
Features Overview

AdminBar



AdminBar allows you to perform common actions quickly: Search items, check actions history, manage users and manage site.

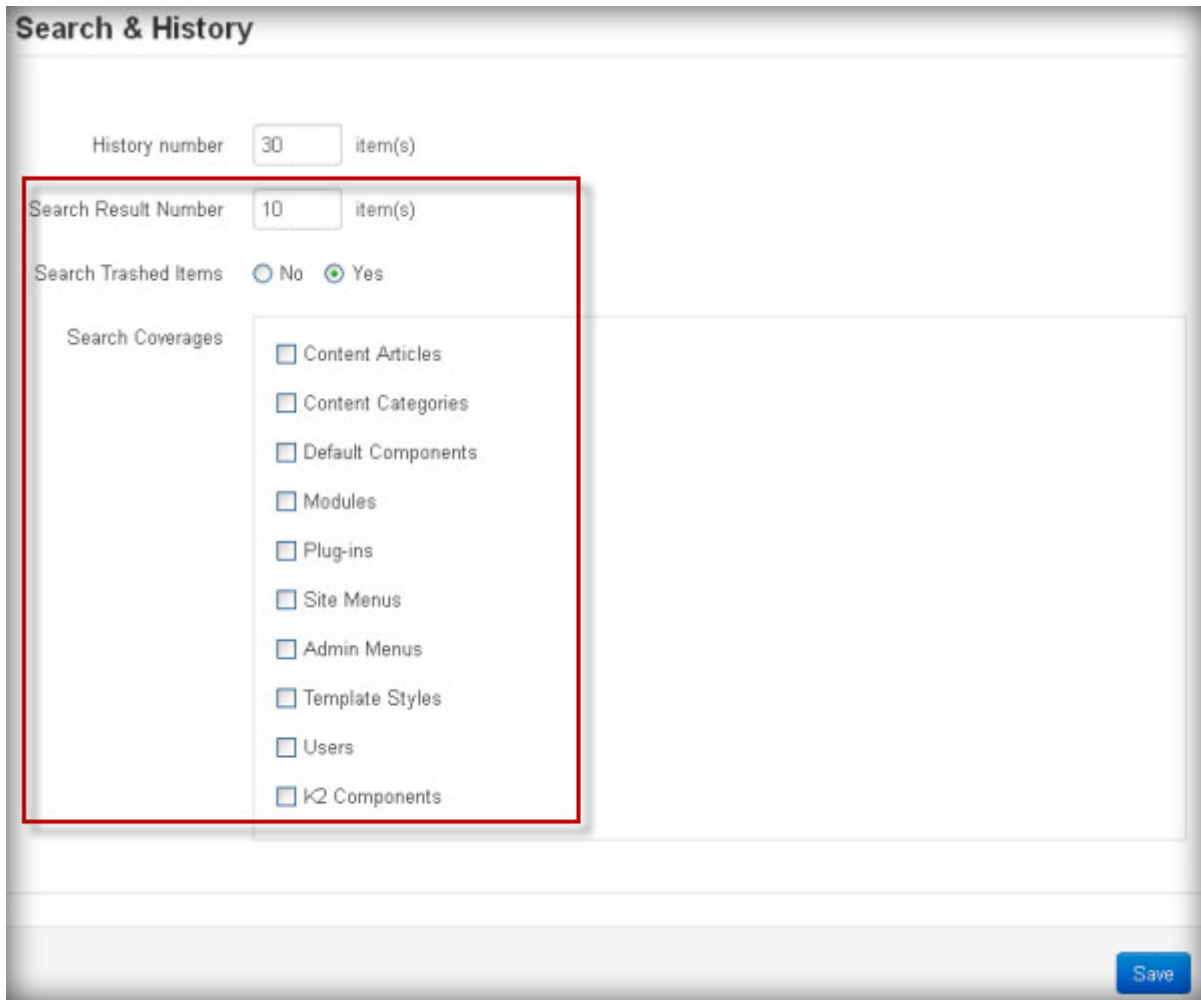
Spotlight Search



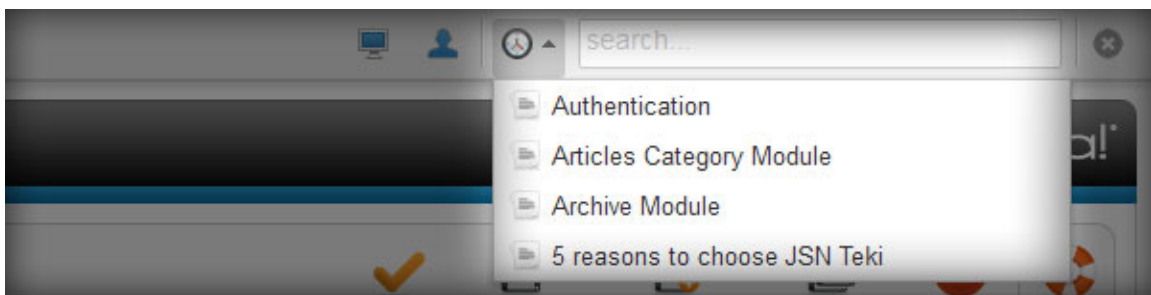
Spotlight Search helps you search items in your website quickly.

- **Search Coverages:** You can search in 10 areas such as Articles, Modules, etc.
- **Link to full Site Search page:** Click “See more”, you can go to the full results page.

You can set **Search Result Number** and **Search Coverages** in the **Configuration** page.



History



All items you have edited recently are displayed here. You can configure **History Number** in the **Configuration** page.

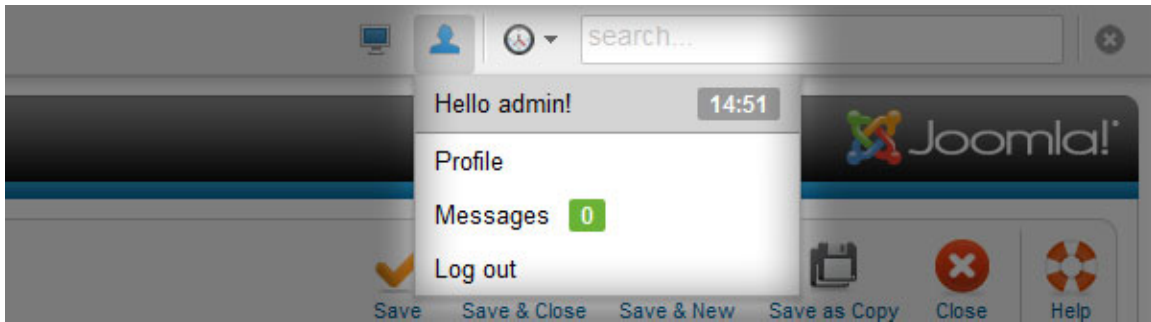
Search & History

History number item(s)

Search Result Number item(s)

Search Trashed Items No Yes

User



User related pages are displayed here. Remarkably, the **Countdown Timer** and the **Person icon** indicate remaining time in your session in numbers and battery-like.

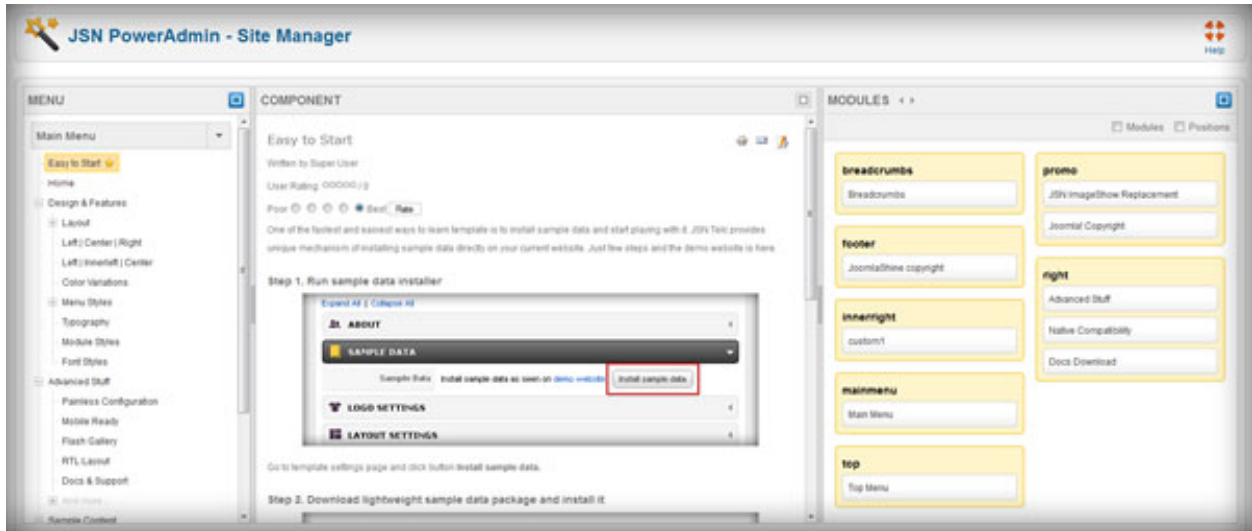
If you want to be logged in forever in your session, set **Set Infinite Session** to Infinite in the **Configuration** page.

User

Set Infinite Session No Yes

Show Warning In minute(s), or Do not show

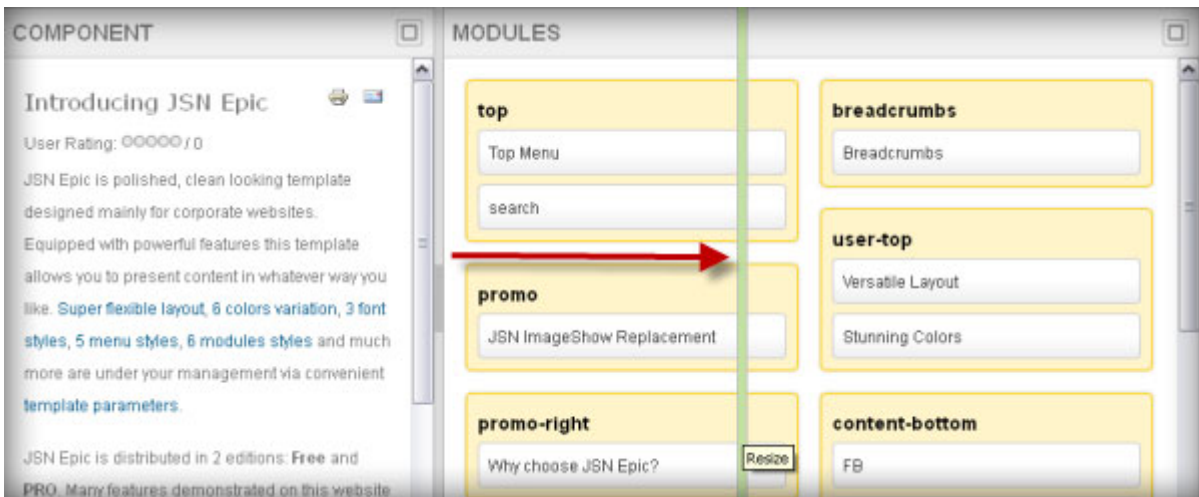
Site Manager



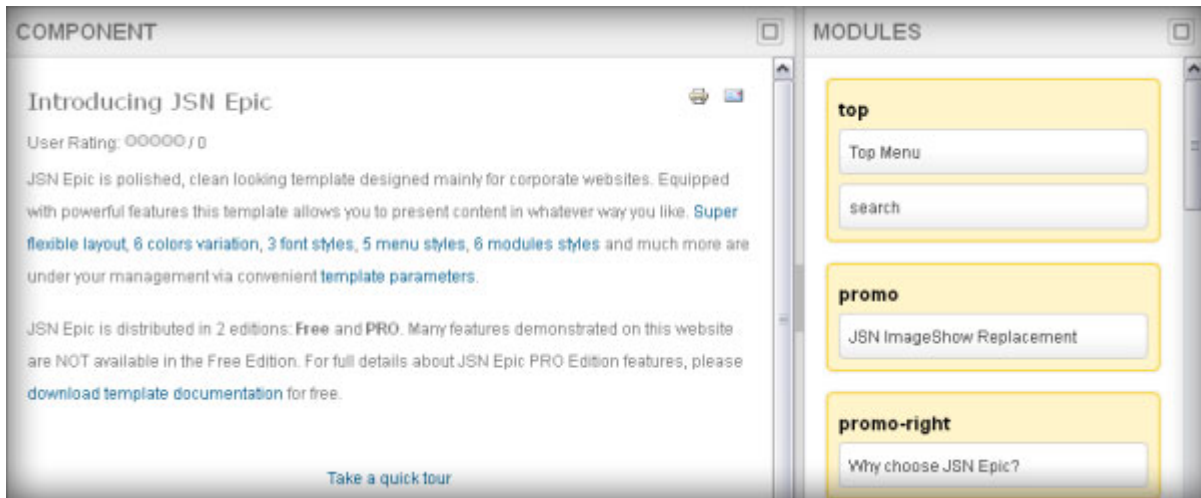
Here we go to the coolest feature of this extension: **Site Manager**. It helps you control the website content in one place. As you see, it covers **Menu**, **Component** and **Modules**.

Please note that, all the changes you make here is auto-saved.

More conveniently, you can resize among 3 sections as you wish, drag the bar between 2 certain sections to the position you want to enlarge or shrink one section.

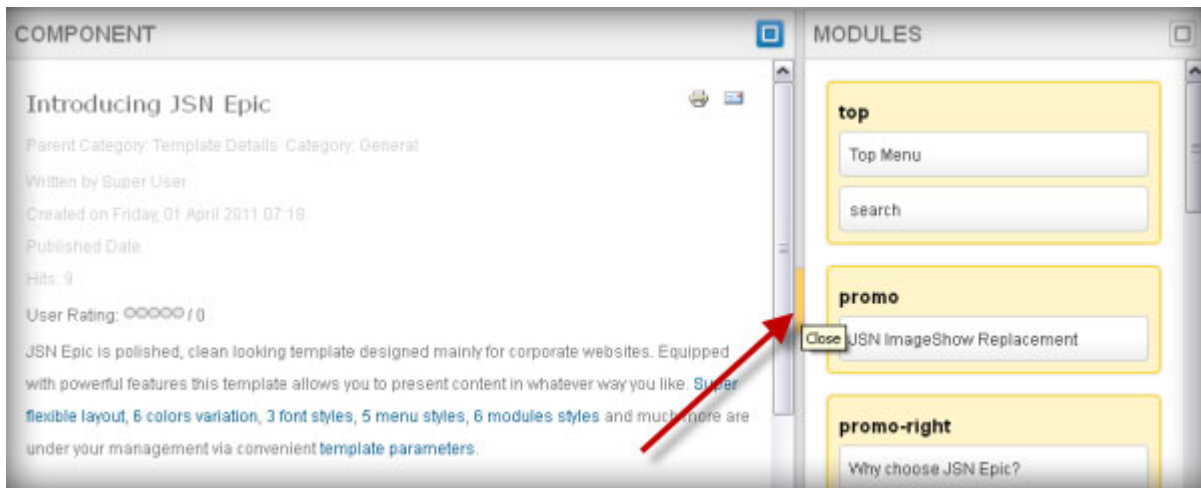


This is resized Component section

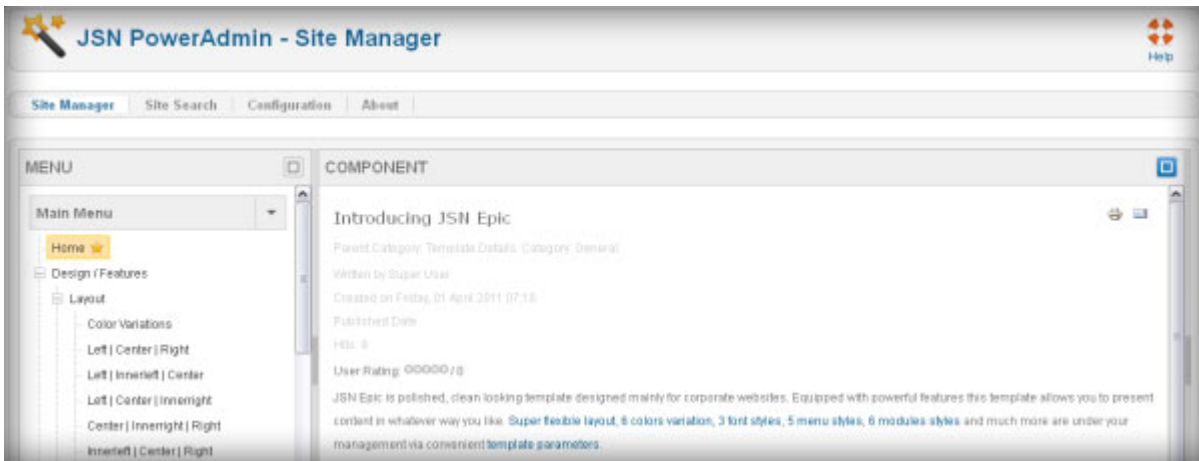


Moreover, you can also close **Modules** or **Menu** sections to get full screen for **Component**. It helps you to customize your content clearly

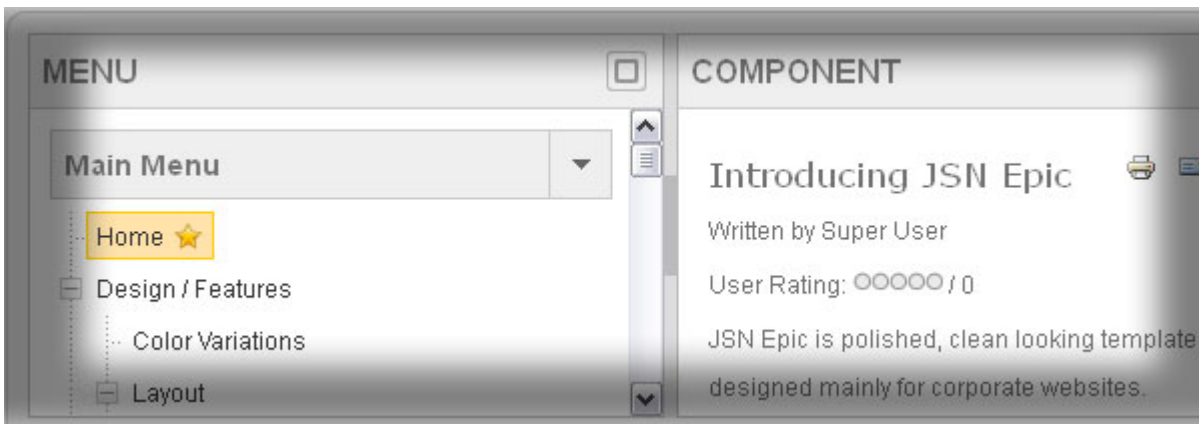
Simply click on the bar



And now you have the full screen, you can do similar thing with **Menu**



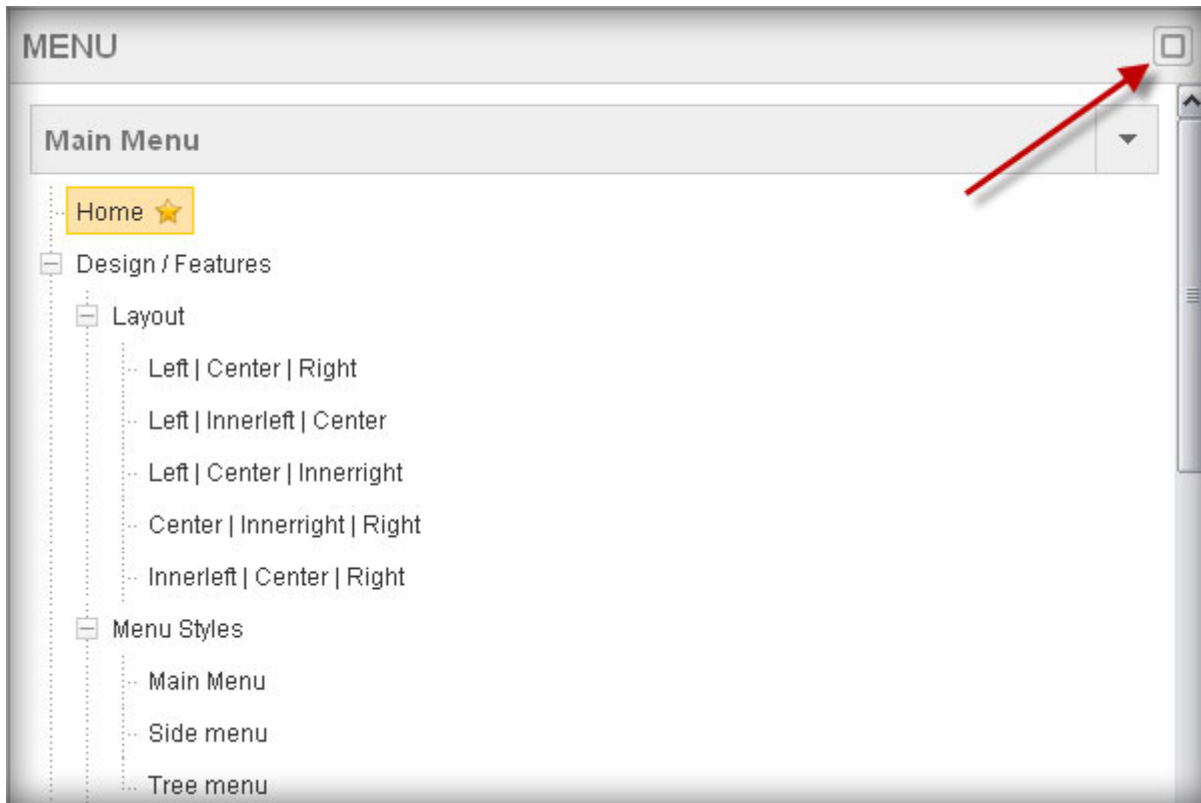
Menu



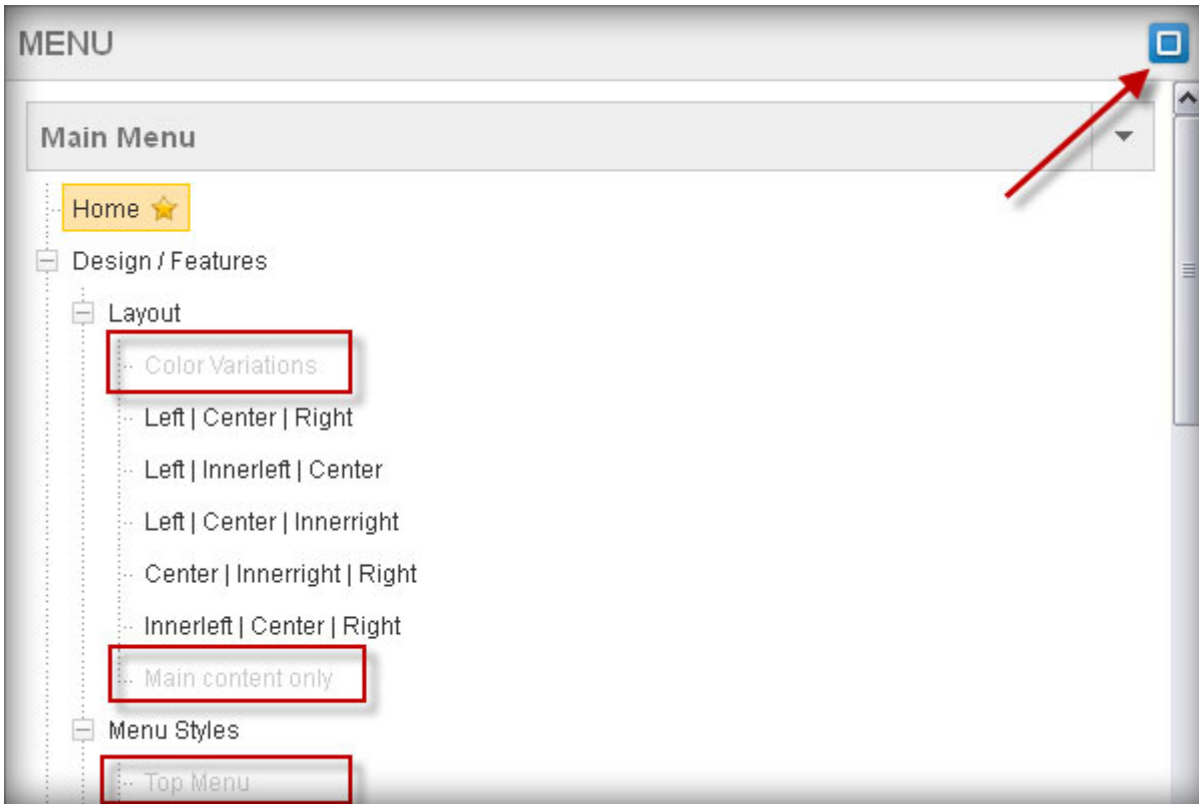
Here you can manage your menus. If you want to move items within a menu, simply drag and drop them. If you want to edit more, click on menu items.

Show/hide unpublished menu items

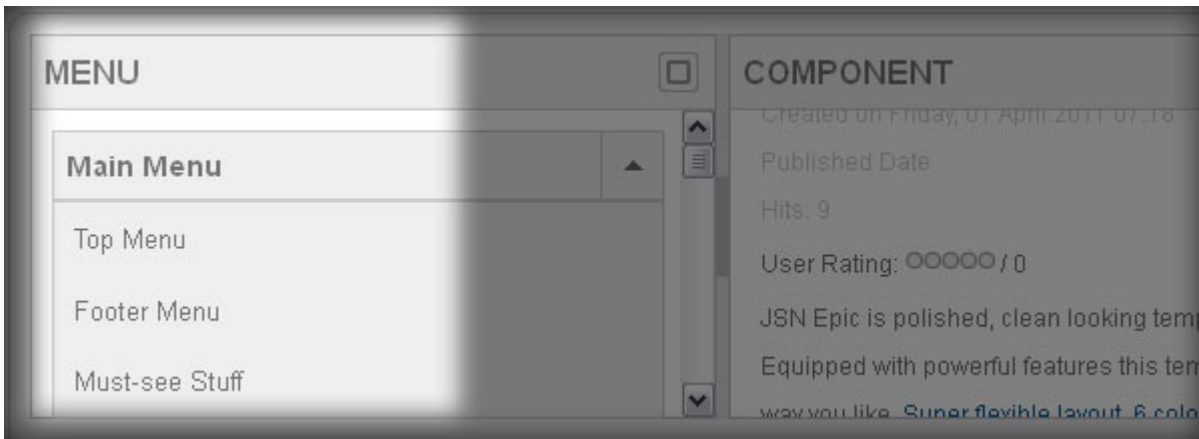
In this figure, you are hiding unpublished menu items. If you want to see them, let's click on the icon in upper right corner



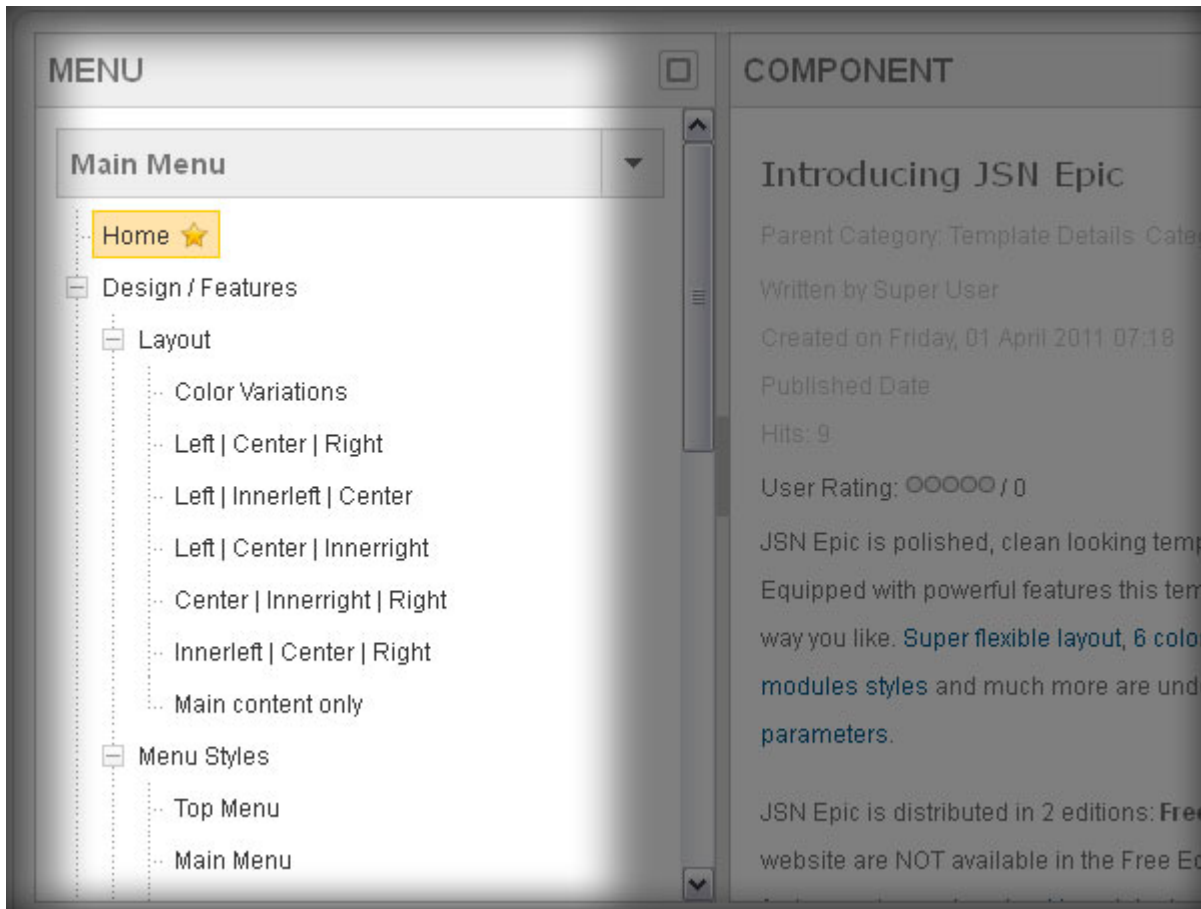
Now you can see unpublished menu items, the icon turned blue as well.



Manage all menus

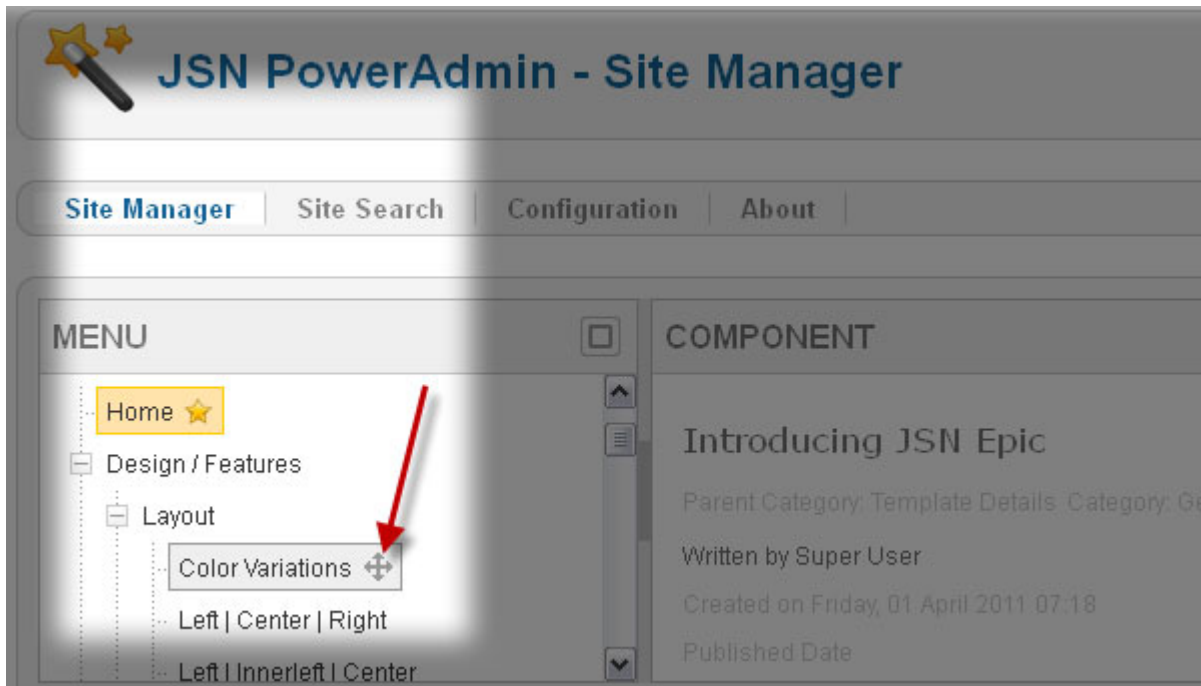


Manage all menu items in each certain menu

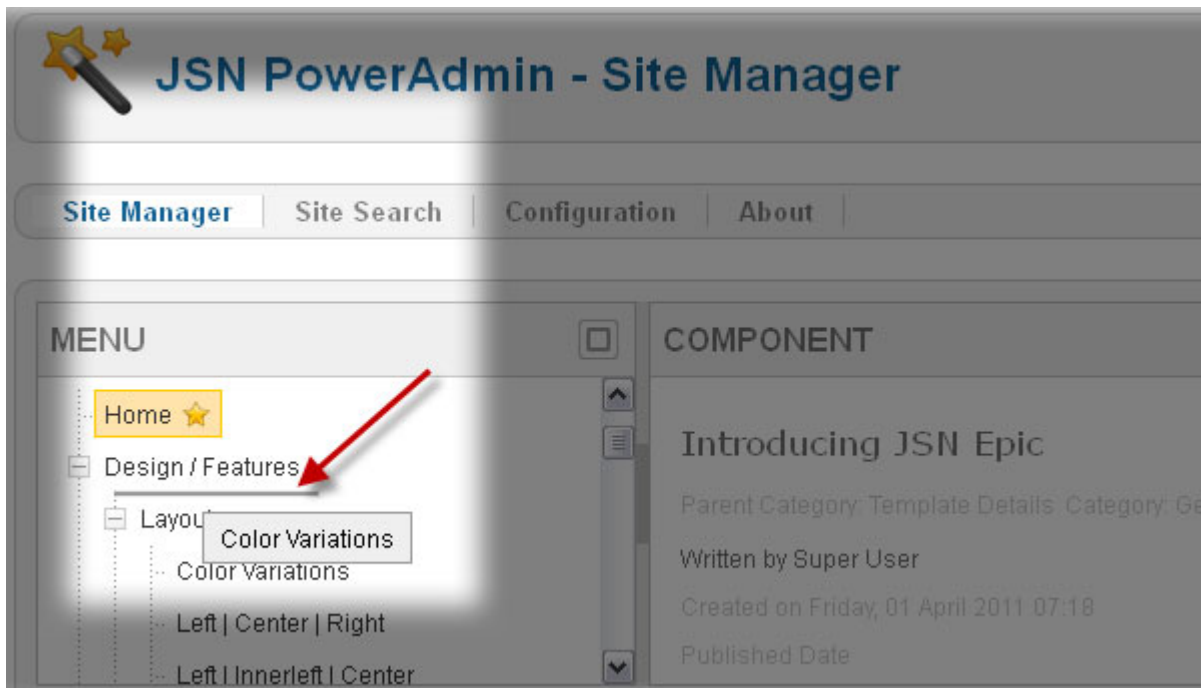


Drag and drop to move items within a menu

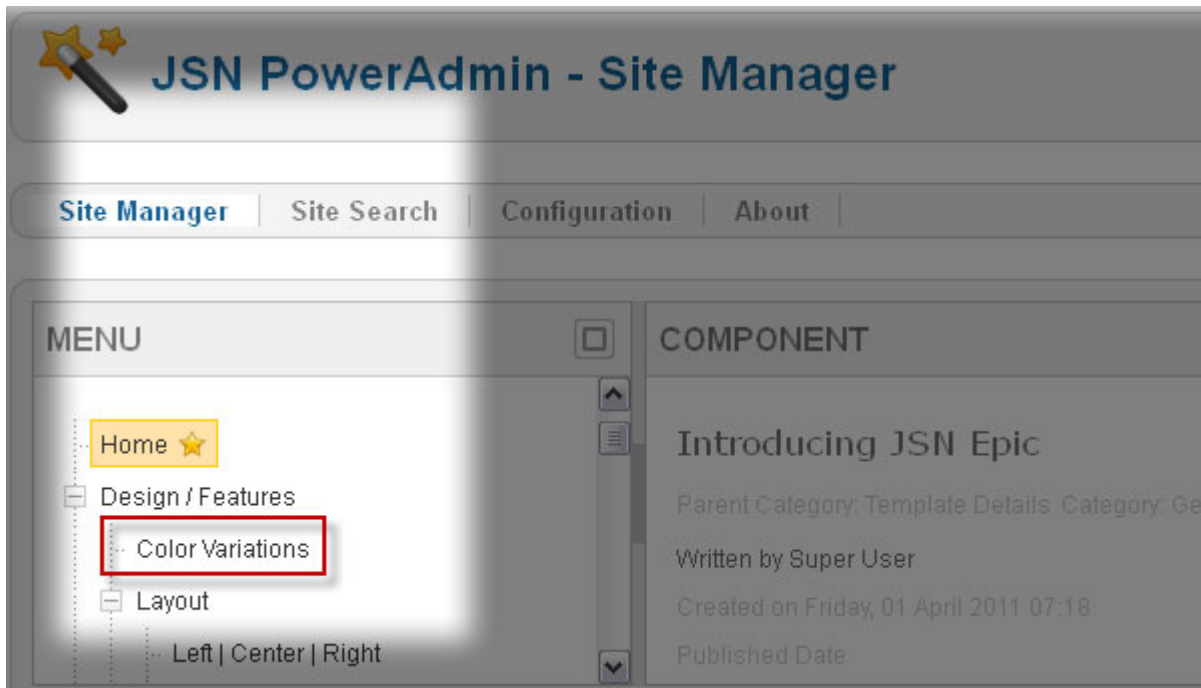
- Drag selected menu item



- Choose place to drop it



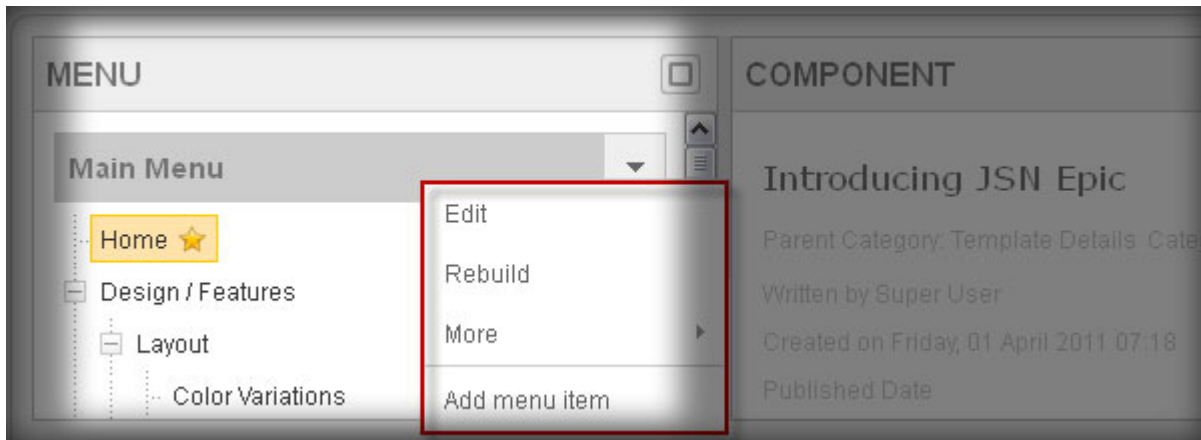
New position of the menu item



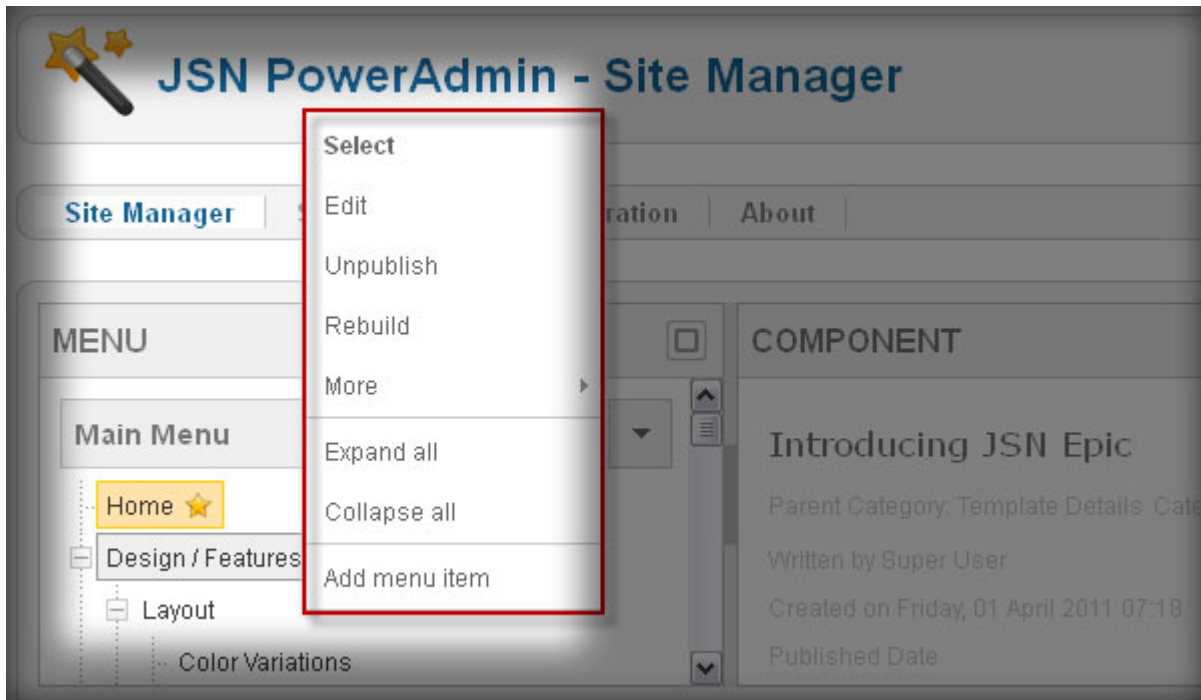
Customize menus and menu items

Click on menu or menu items to customize them

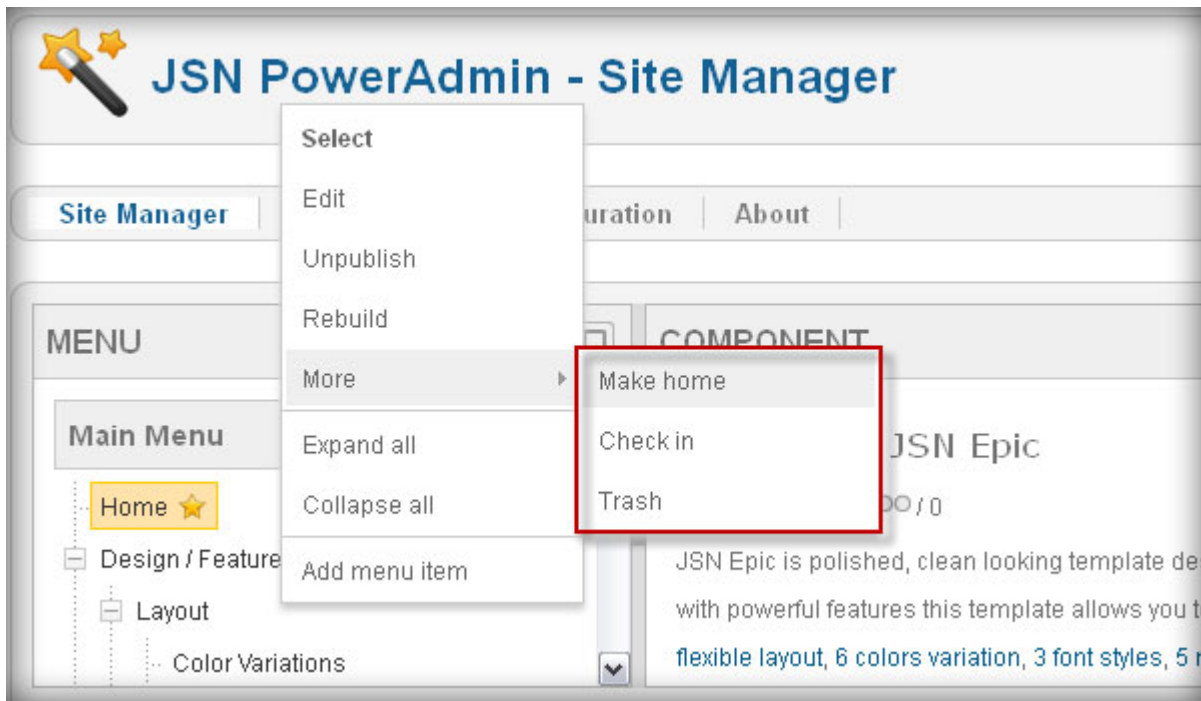
With a menu, you can *edit, rebuild, add a menu item, delete or change permissions*.



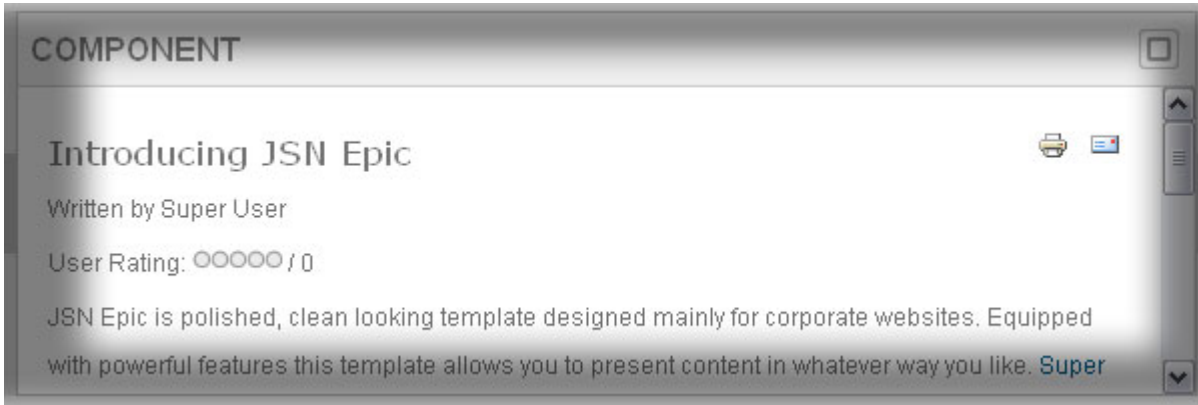
With a menu item, you can *select* to display the corresponding component on the right as well as *edit, unpublish, rebuild, add menu item*. *Expand all* and *Collapse all* functionalities help you to show/hide all sub menu items of each parental menu item.



In addition, you can “**Make home**” (set it as a homepage), “**Check-in**” for editing or “**Trash**” a menu item



Component



This section shows you the component of the menu item you selected. Click on elements to edit available them as you want.

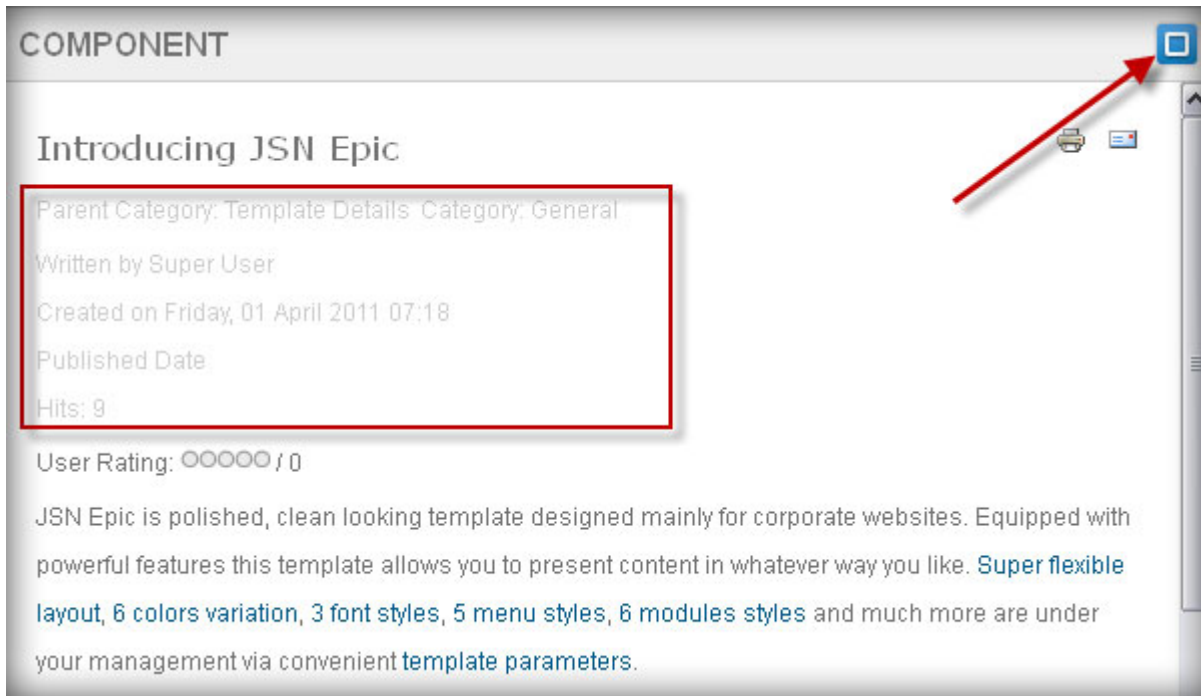
Show/hide disabled elements on the page

Click on this icon below to show/hide disabled elements on the page

In this figure below, disabled elements are hidden on the page

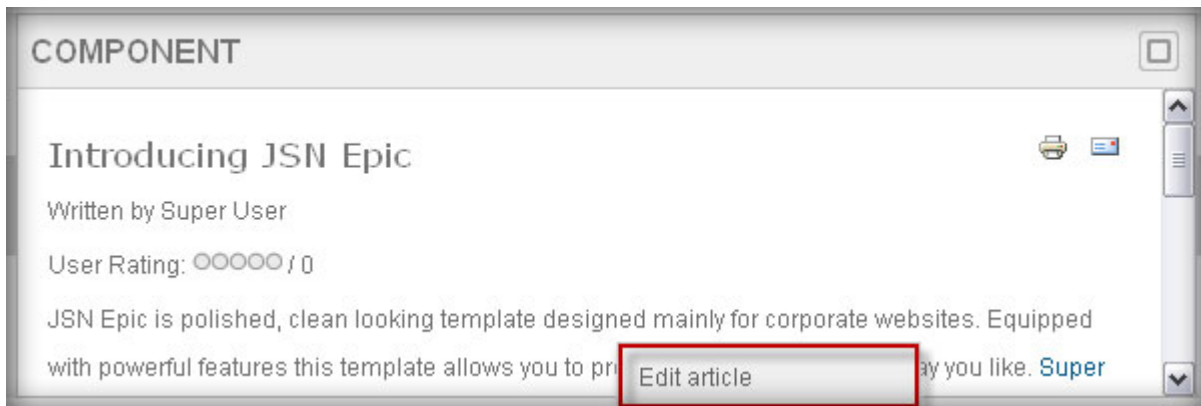


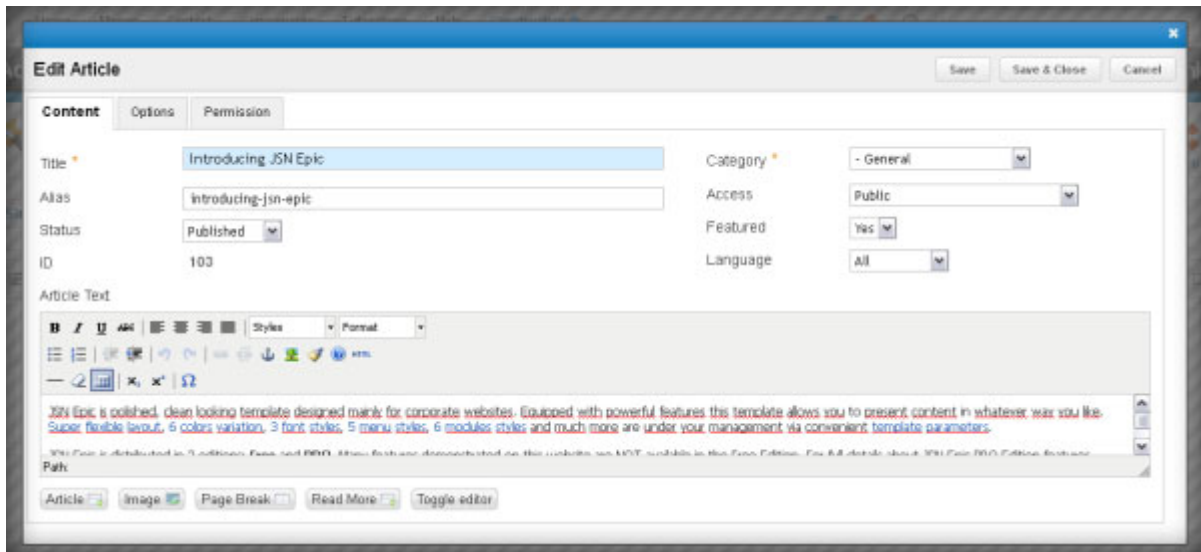
With this one, disabled elements are shown on the page, at that time, you can see the icon turned blue.



With each field, you might click on a certain one to:

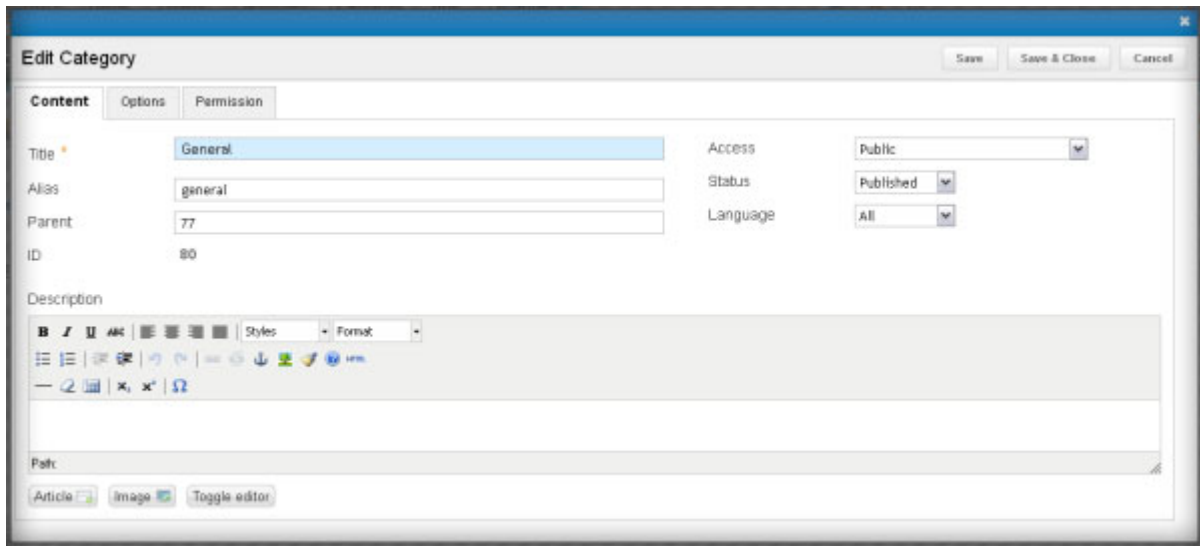
Edit article





Edit category





Hide element: click to hide disabled elements with two choices “For all pages globally” or “For this page only”

Show element: click to show enabled elements with two choices “For all pages globally” or “For this page only”

Enable link: click to show enable link with two choices “For all pages globally” or “For this page only”

Disable link: click to show disable link with two choices “For all pages globally” or “For this page only”

- **For all pages globally:** change of the element will be applied for all components on all pages of the website
- **For this page only:** change of the element will be applied for this component only

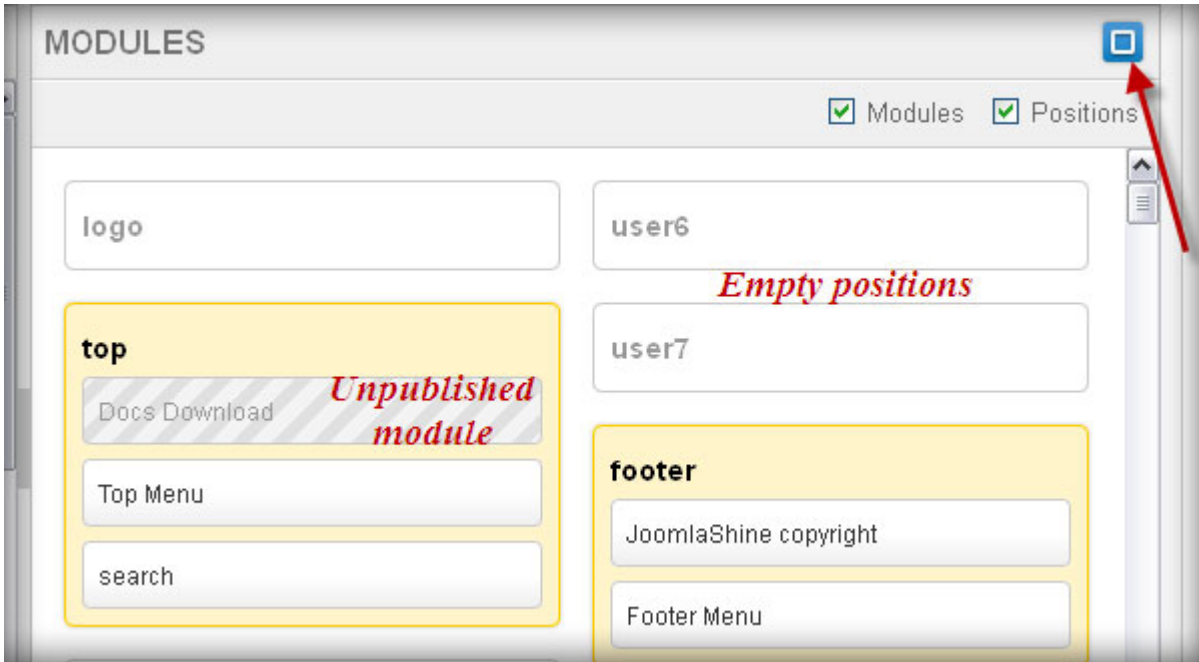
Modules



Here you can manage all **Modules** of the current default template. You can drag and drop to change module positions, or click on modules and positions to get more editing options.

In **Modules** section, we can also show or hide unpublished modules and empty positions, simply click the icon as usual

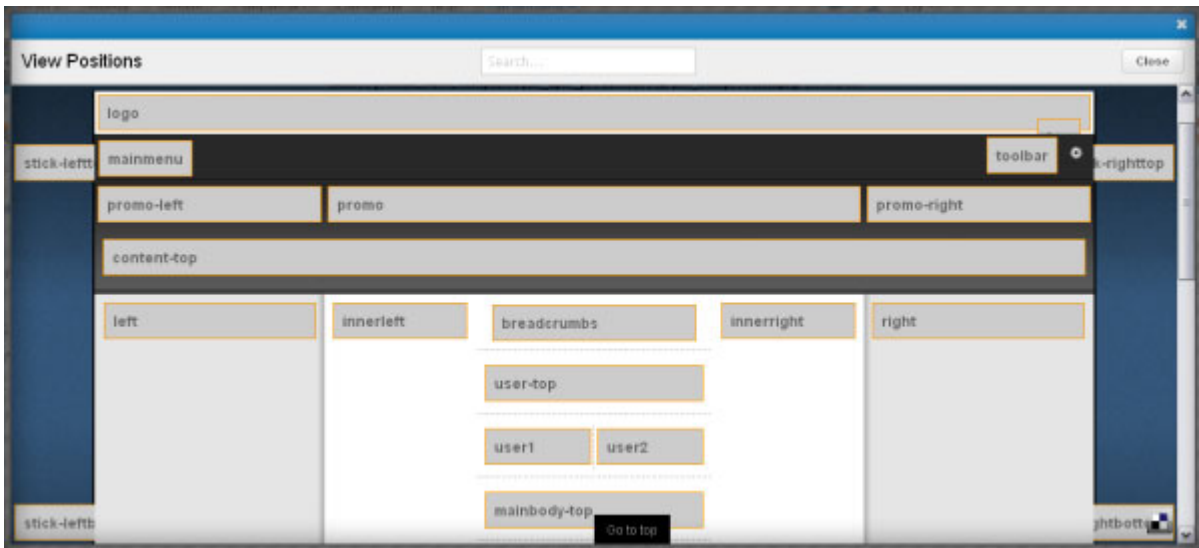
After clicking on this icon, you can tick either “*Modules*” or “*Positions*” boxes (or both) to see which modules are unpublished or (and) which positions are empty.



With a module position, you can:

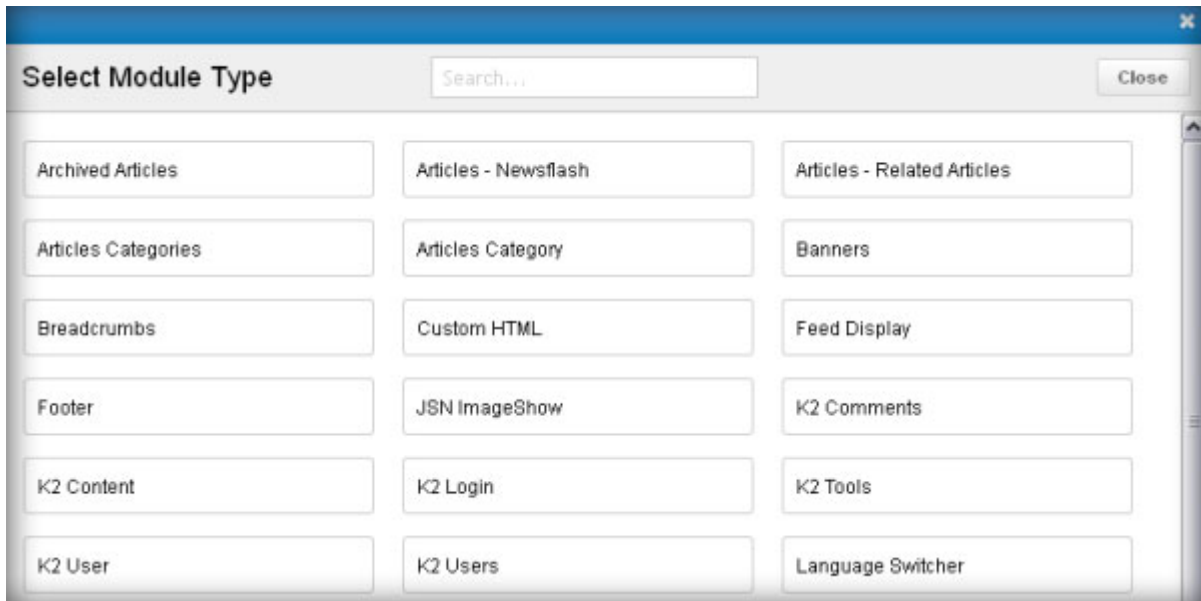
View positions

You can click on a module position and select “*View position*” to see all module positions of the template

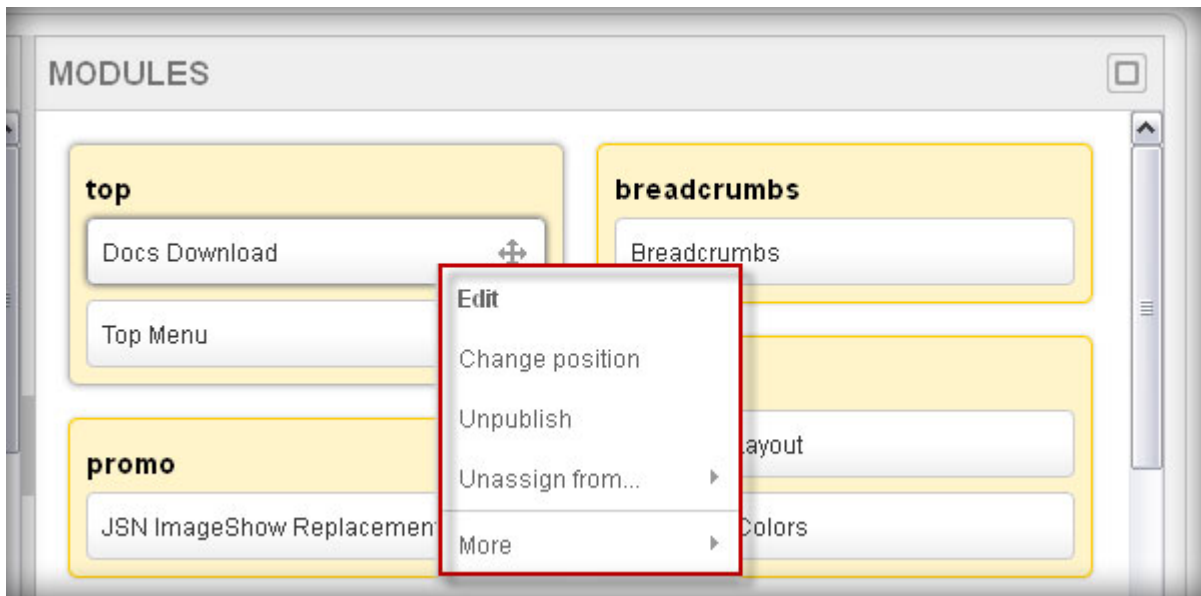


Add module

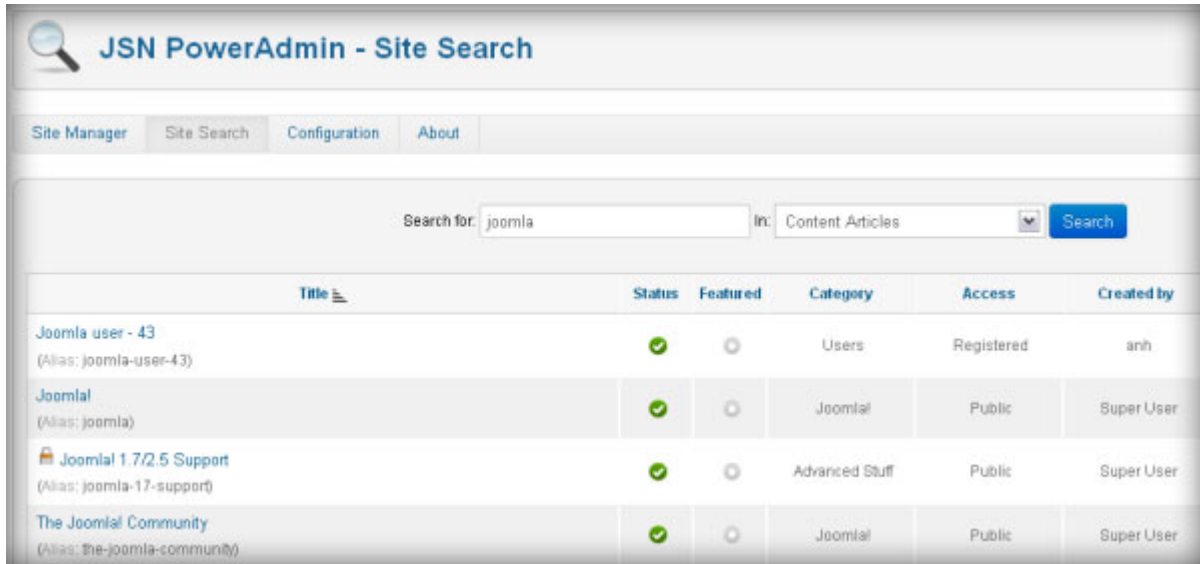
You can click on a module position and select “*Add module*”



With a module, you can select *to edit, change position, unpublish, unassign* it from a position and so on



Site Search



Site search helps you search a specific item in a separate section.

Site Configuration

Global Parameters

This is the place where you can configure parameters, including 2 main parts: **Admin Bar** and **Site Manager**.

In **Admin Bar**, you can configure parameters of admin bar, search and history, user, menu, simply select “Yes” or “No”, set the number or tick the boxes you want.

In **Site Manager**, only one parameter, you should select “*Yes*” to show help if this is your first run.

JSN PowerAdmin - Configuration

Site Manager Site Search Configuration About

CONFIGURATION

- Global Parameters
- Languages
- Permissions

Admin Bar Site Manager

General

Enable AdminBar No Yes

Set Pinned Bar No Yes

Menu

Logo File administrator/components/com_poweradmin/assets/images/logo-jsnpoweradmin Select Clear

Logo Link http://www.joomlashine.com/joomla-extensions/jsn-poweradmin.html

Add "Uninstall" feature No Yes

User

Set Infinite Session No Yes

Show Warning In 1 minute(s), or Do not show

Search & History

History number 30 item(s)

Search Result Number 10 item(s)

Search Trashed Items No Yes

Search Coverages

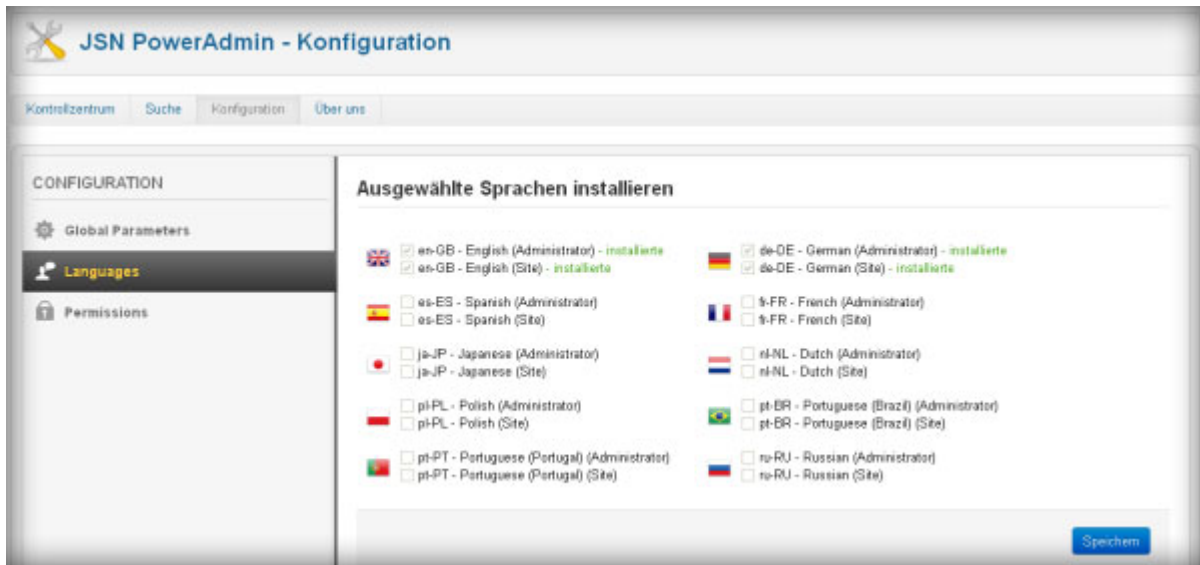
- Content Articles
- Content Categories
- Default Components
- Modules
- Plug-ins
- Site Menus
- Admin Menus
- Template Styles
- Users
- K2 Components

Save

Languages

If you install language packages after installing JSN PowerAdmin, you need to select languages to be installed by ticking the box. At that time, JSN PowerAdmin supports the following languages: English, German, Dutch, French, Russian, Spanish, Portuguese (Portugal), Portuguese (Brazil), Polish and Japan

Let' see an example of JSN PowerAdmin in German



Permissions

Manage the permission settings for the user groups

The screenshot displays the JSN PowerAdmin configuration interface. At the top, there is a navigation bar with 'Site Manager', 'Site Search', 'Configuration', and 'About'. The main content area is titled 'CONFIGURATION' and includes a sidebar with 'Global Parameters', 'Languages', and 'Permissions'. The 'Permissions' section is active, showing a table for managing permissions for user groups. The table has three columns: 'Action', 'Select New Setting', and 'Calculated Setting'. The 'Public' group is expanded, showing permissions for 'Configure', 'Access Administration Interface', 'Access Site Manager', and 'Access Site Search', all currently set to 'Inherited' and 'Not Allowed'. Below the table, there are expandable sections for other user groups: Manager, Administrator, Registered, Registered, Author, Editor, Custom Group (Example), and Super Users. A 'Save' button is located at the bottom right. Two footnotes provide additional context on setting inheritance and calculation.

Manage the permission settings for the user groups below. See notes at the bottom.

Action	Select New Setting ¹	Calculated Setting ²
Configure	Inherited	Not Allowed
Access Administration Interface	Inherited	Not Allowed
Access Site Manager	Inherited	Not Allowed
Access Site Search	Inherited	Not Allowed

▶ Manager
▶ Administrator
▶ Registered
▶ Registered
▶ Author
▶ Editor
▶ Custom Group (Example)
▶ Super Users

1. If you change the setting, it will apply to this and all child groups, components and content. Note that Denied will overrule any inherited setting, and also the setting in any child group, component or content. In the case of a setting conflict, Deny will take precedence. Not Set is equivalent to Denied but can be changed in child groups, components and content.
2. If you select a new setting, click Save to refresh the calculated settings.

Save

What's next?

We would love to hear what you say:

[Submit a bug report](#) and we will fix it ASAP. Don't forget to visit [Joomlashine extensions page](#) to check for new updates



www.facebook.com/joomlashine



www.twitter.com/joomlashine



www.youtube.com/joomlashine