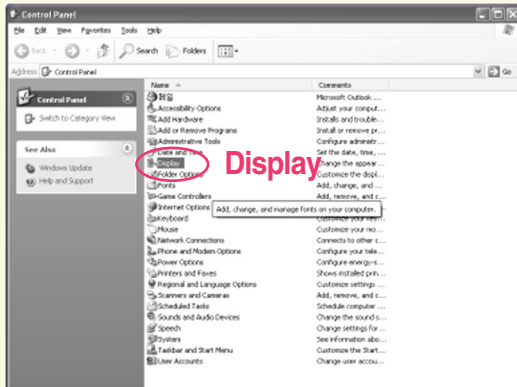


Windows XP users

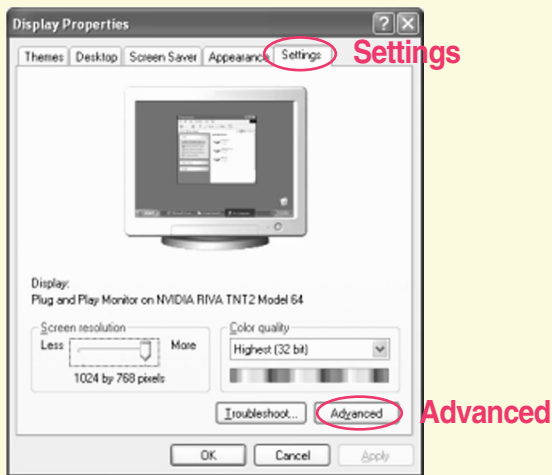
When you install the Monitor Driver, resolution and frequency are automatically set to the Monitor. So you can work on the clearer display. You can download the driver on <http://www.lge.com>

STEP

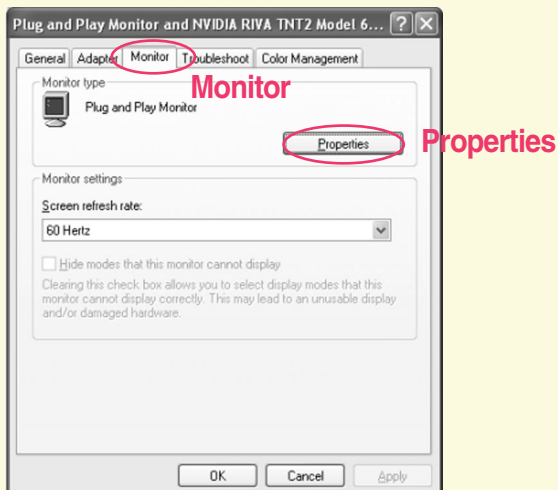
1. Click on **Start**, select **Settings**, then click **Control Panel**. Double click on **Display**.



2. Select the **Settings** tab and Click on **Advanced....**



3. Select the **Monitor** tab and Click on **Properties**.

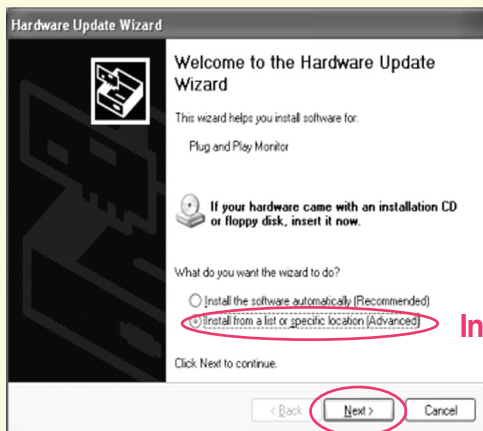


Windows XP users

4. Click on **Driver** tab and Click on **Update Driver...**



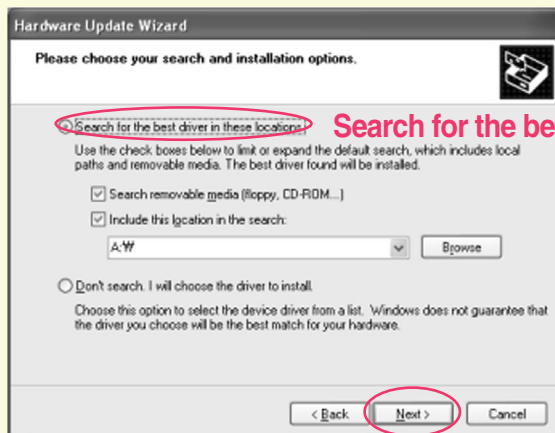
5. Select the **Install from a list or specific location (Advanced)** option and click on **Next**.



Install from a list or specific location (Advanced)

Next

6-1. Select the **Search for the best driver in these locations** and Click on **Next**.

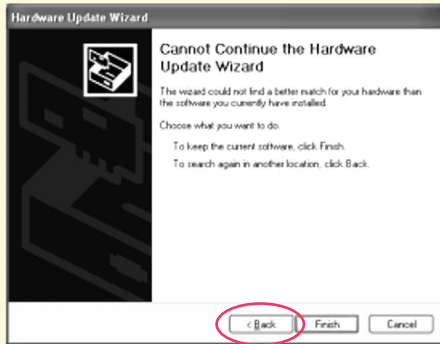


Search for the best driver in these locations

Next

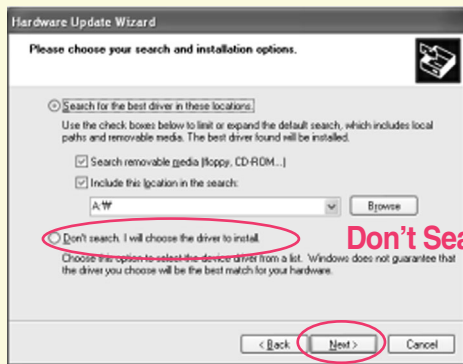
Windows XP users

IF you see '**Cannot Continue the Hardware Update Wizard**' window on your monitor, Click on **Back** and then follow these steps (5 → 6-2 → 7).



Back

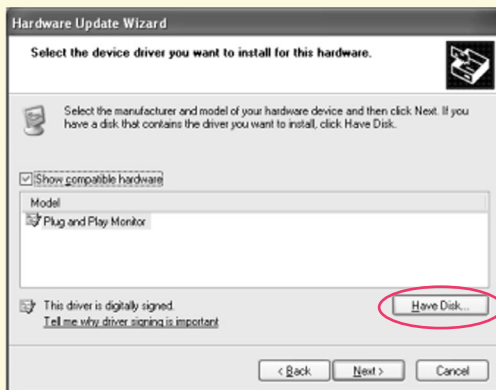
6-2. Select the **Don't Search. I will choose the driver to install** and Click on **Next**.



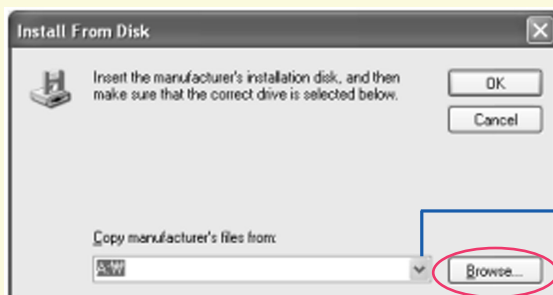
Don't Search. I will choose the driver to install

Next

Select the **Have Disk.....** and click on **Browse**.



Have Disk



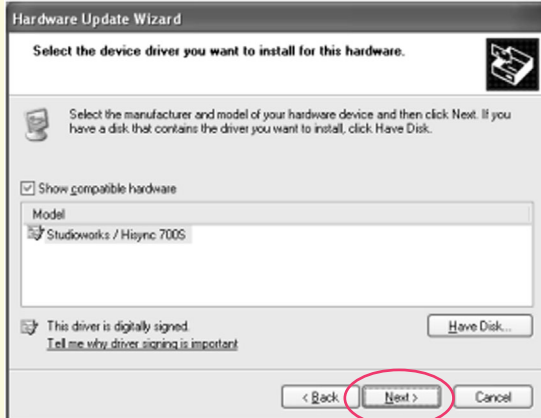
Using the button, Select the correct drive.
ex) Diskette → A: W, CD → D: W(E: W...)

Browse

Windows XP users

Find and open the *.INF file on your CD-ROM (or diskette) (under the \Driver (Windows...) directory) and click on **OK**.

Click on **Next** to install the selected monitor.



Next

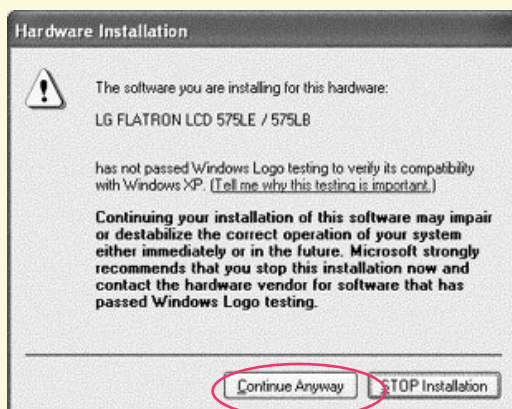
7. Click on **Finish**.



Finish

Important Notice

This message may appear several times during the installation of your monitor driver. Click **Continue Anyway** to continue (Windows XP). This action will not harm your monitor or system.



Continue Anyway

Windows XP 사용자를 위한 설치 순서

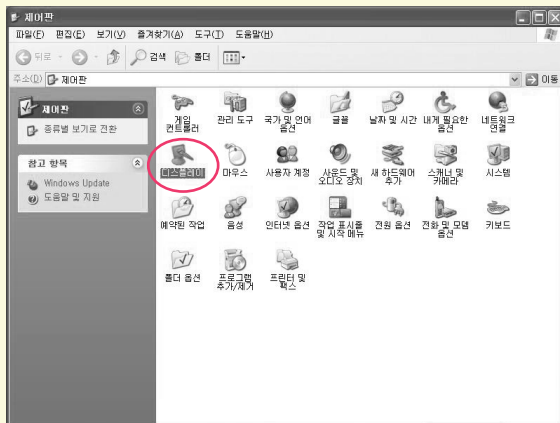
모니터 드라이버를 설치하면 해상도 및 주파수가 모니터에 맞게 설정되므로 선명한 화면에서 작업하실 수 있습니다.

홈페이지 <http://www.lge.co.kr>에서도 다운받아서 설치하실 수 있습니다.

제공된 CD를 드라이브에 넣으세요.

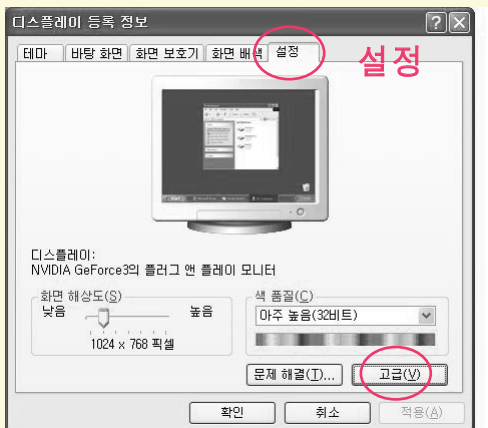
● 설치 순서

1. '시작' → '설정' → '제어판' → '디스플레이' 클릭



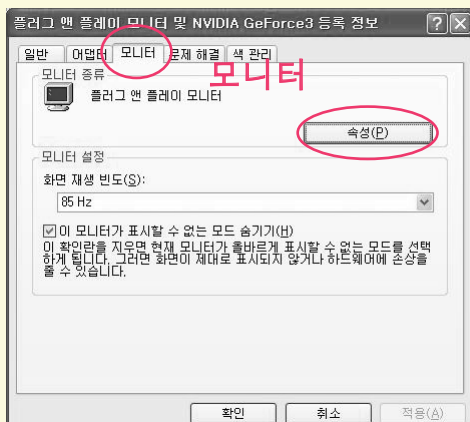
디스플레이

2. '설정' 클릭 → '고급(V).....' 클릭



고급(V)

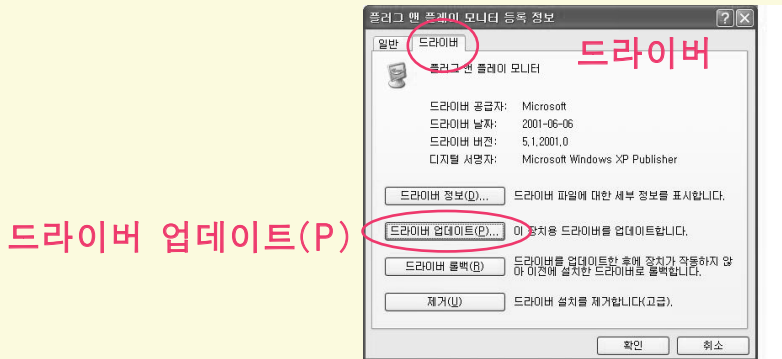
3. '모니터' 클릭 → '속성(P)' 클릭



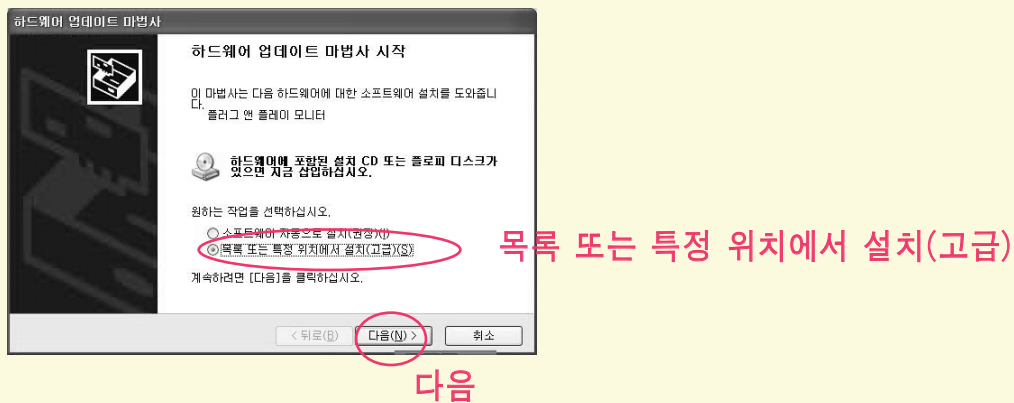
속성(P)

Windows XP 사용자를 위한 설치 순서

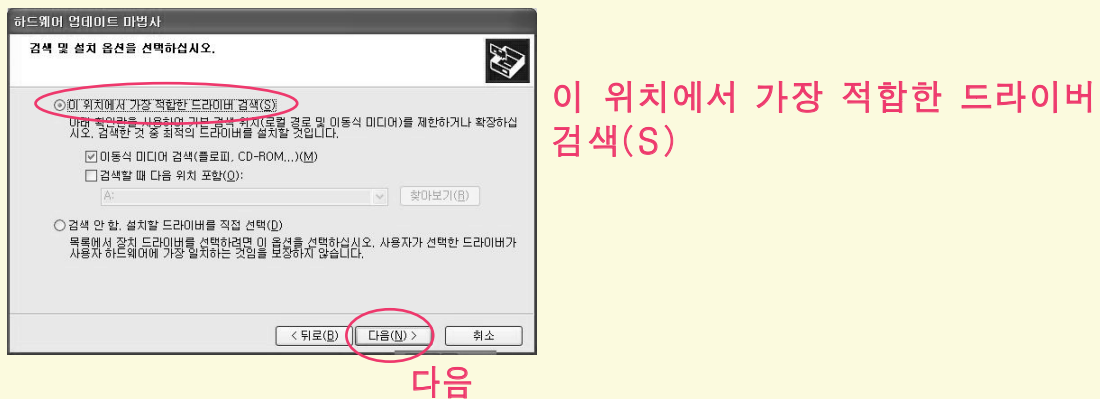
4. '드라이버' 클릭 → '드라이버 업데이트(P)' 클릭



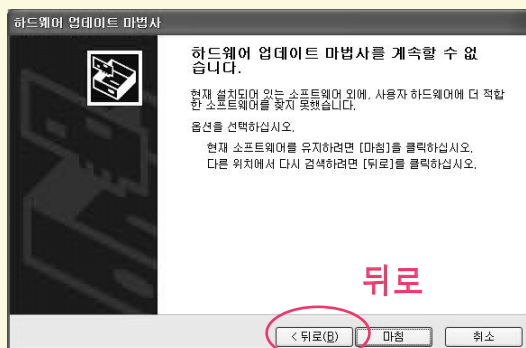
5. '목록 또는 특정 위치에서 설치(고급)' 선택 → '다음' 클릭



6-1. '이 위치에서 가장 적합한 드라이버 검색(S)' 선택 → '다음' 클릭

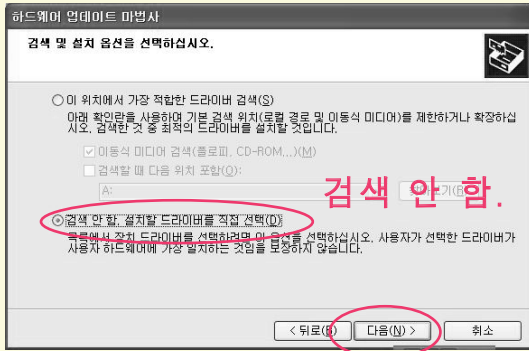


만약, 하기와 같이 '하드웨어 업데이트 마법사를 계속할 수 없습니다.'라는 문구가 보이는 경우에는..... '뒤로'를 선택한 후, 다음과 같은 단계를 따라주시기 바랍니다.
: 5 → 6-2 → 7



Windows XP 사용자를 위한 설치 순서

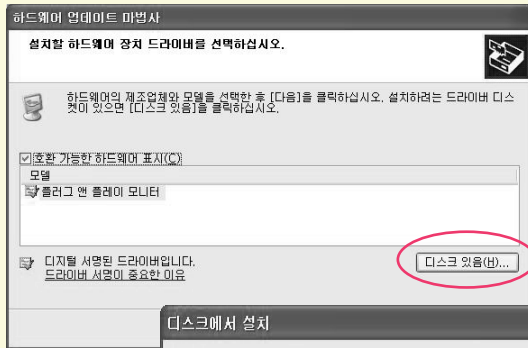
6-2. '검색 안 함. 설치할 드라이버 직접 선택(D)' 클릭 → '다음' 클릭



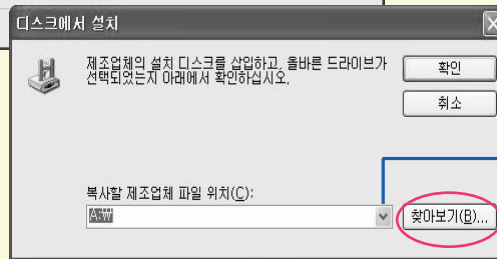
검색 안 함. 설치할 드라이버 직접 선택(D)

다음

'디스크 있음' 클릭 → '찾아보기' 클릭



디스크 있음



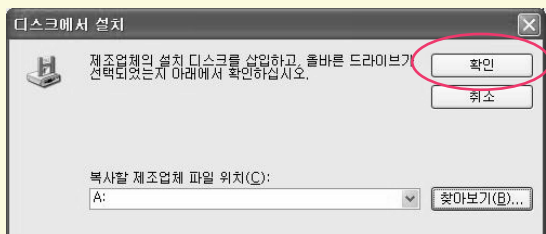
▼을 눌러 드라이브를 선택하세요.
예) 디스켓 → A:W, CD → D:W(E:W...)

찾아보기

해당 모델 선택 → '열기' 클릭 → '확인' 클릭



열기

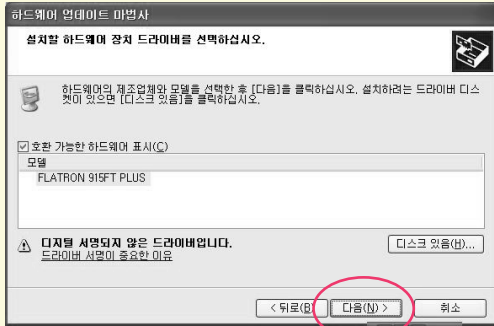


확인

예) 디스켓 → A:W, CD → D:W(E:W...)

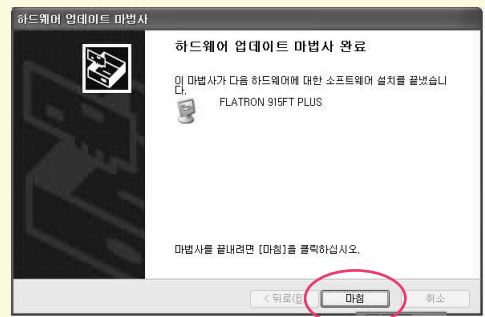
Windows XP 사용자를 위한 설치 순서

모델명 확인 후 '다음' 클릭



다음

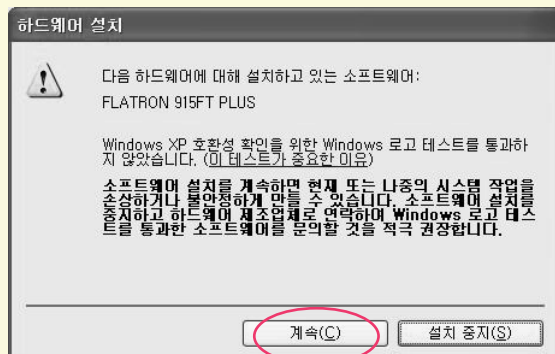
7. '마침' 클릭



마침

[참고]

WINDOWS XP 드라이버 설치시 아래와 같은 메시지가 뜨는 경우엔 '계속(C)' 을 선택하여 설치를 계속하십시오.



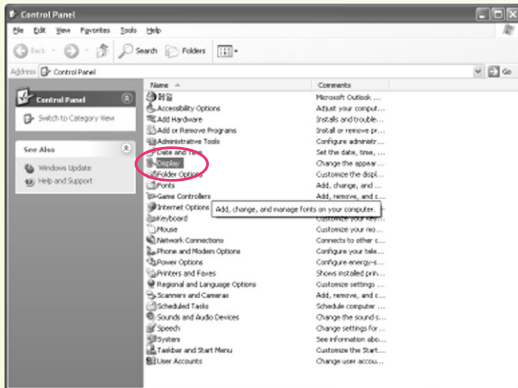
계속

Windows XP 用户

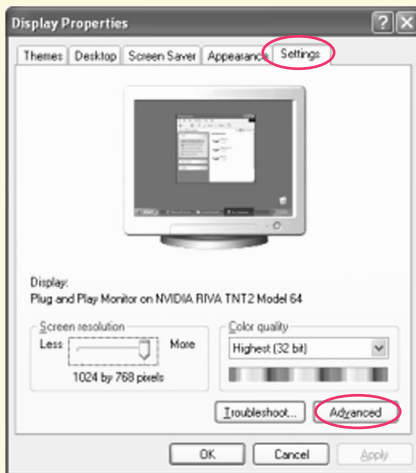
当您安装显示器驱动程序时，分辨率和频率会自动安装在显示器上。您可以在更清晰的状态下工作。如果您的CD或磁盘遗失，请到下列地址下载：
<http://www.lge.com>

● 步骤

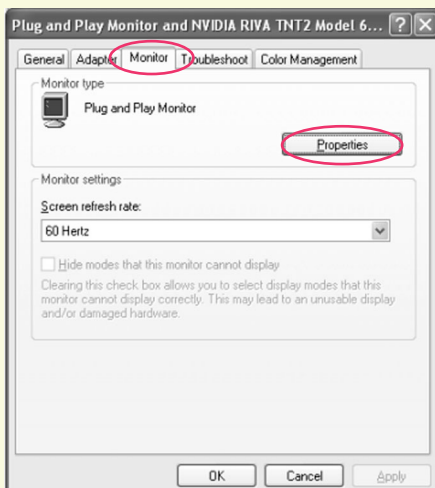
1. 点击开始，选择设置选项，然后点击控制面板，双击显示图标。



2. 选择设置条，点击高级…。

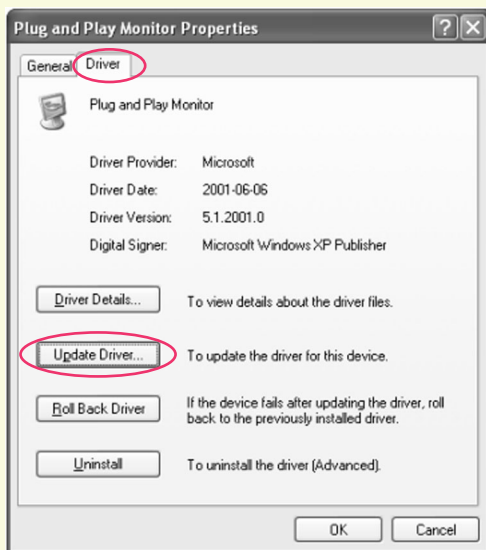


3. 选择监视器，点击属性。

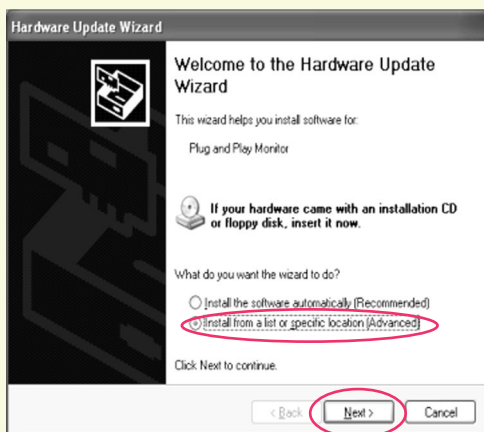


Windows XP 用户

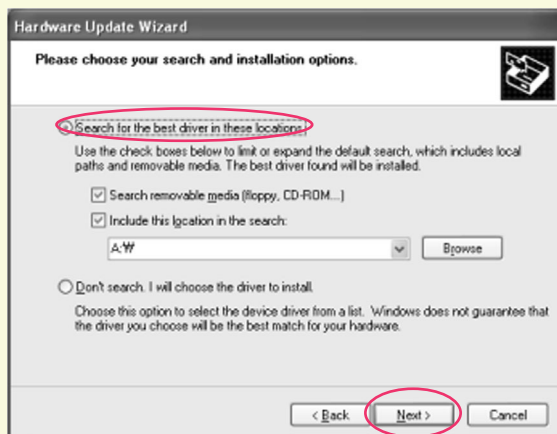
4. 点击驱动程序，然后点击更新驱动程序…。



5. 选择从列表或指定位置安装(高级)选项，然后点击下一步。

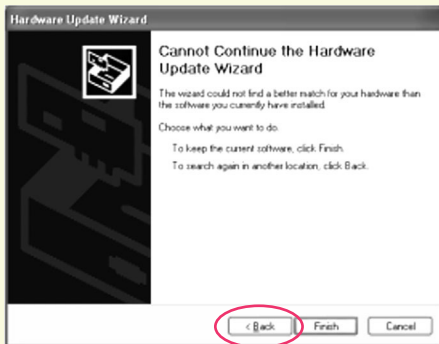


6-1. 选择在这些位置上搜索最佳驱动程序。然后点击下一步。

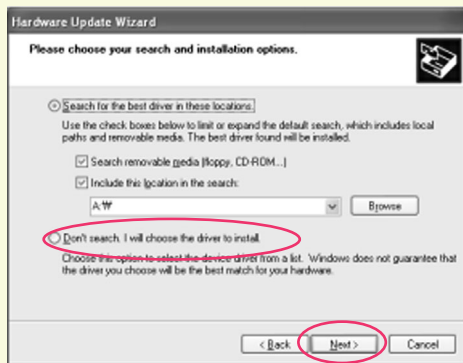


Windows XP 用户

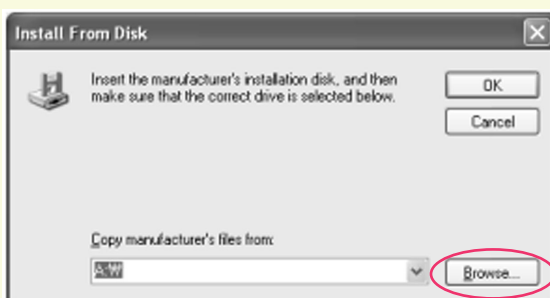
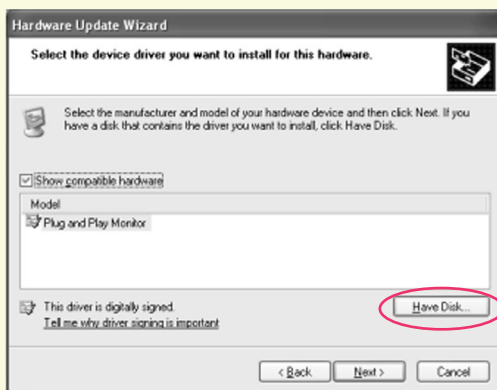
如果您看到无法继续硬件更新向导信息，点击上一步，然后按下列步骤进行。(5 → 6-2 → 7)。



6-2. 选择不要搜索。我要自己选择要安装的驱动程序，然后点击下一步。



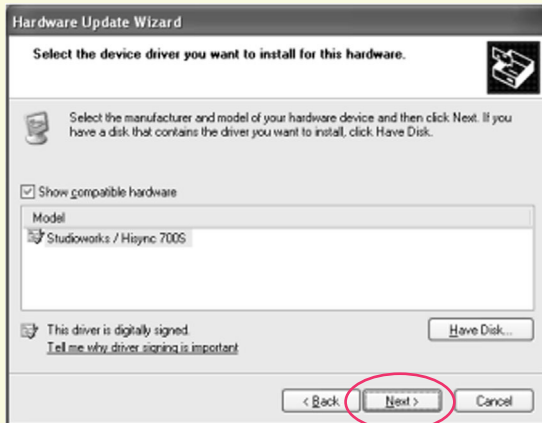
选择从磁盘安装，然后点击浏览。



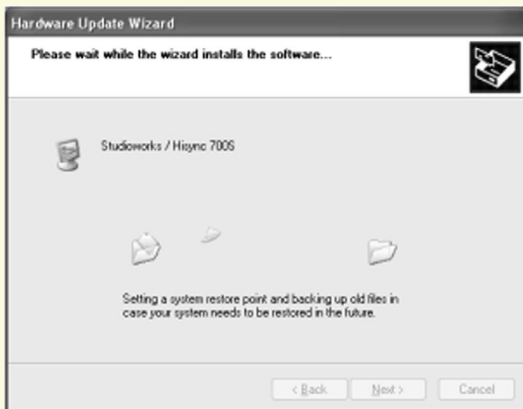
Windows XP 用户

在您的CD或磁盘上(在\Driver(\Windows...)目录下)找到并打开*.INF文件, 点击OK。

点击下一步进行安装。



7. 点击结束。



重要提示

在您安装显示器驱动程序时, 下列信息可能会出现几次。点击Continue Anyway继续进行 (Windows XP)。对您的显示器或系统没有损害。

